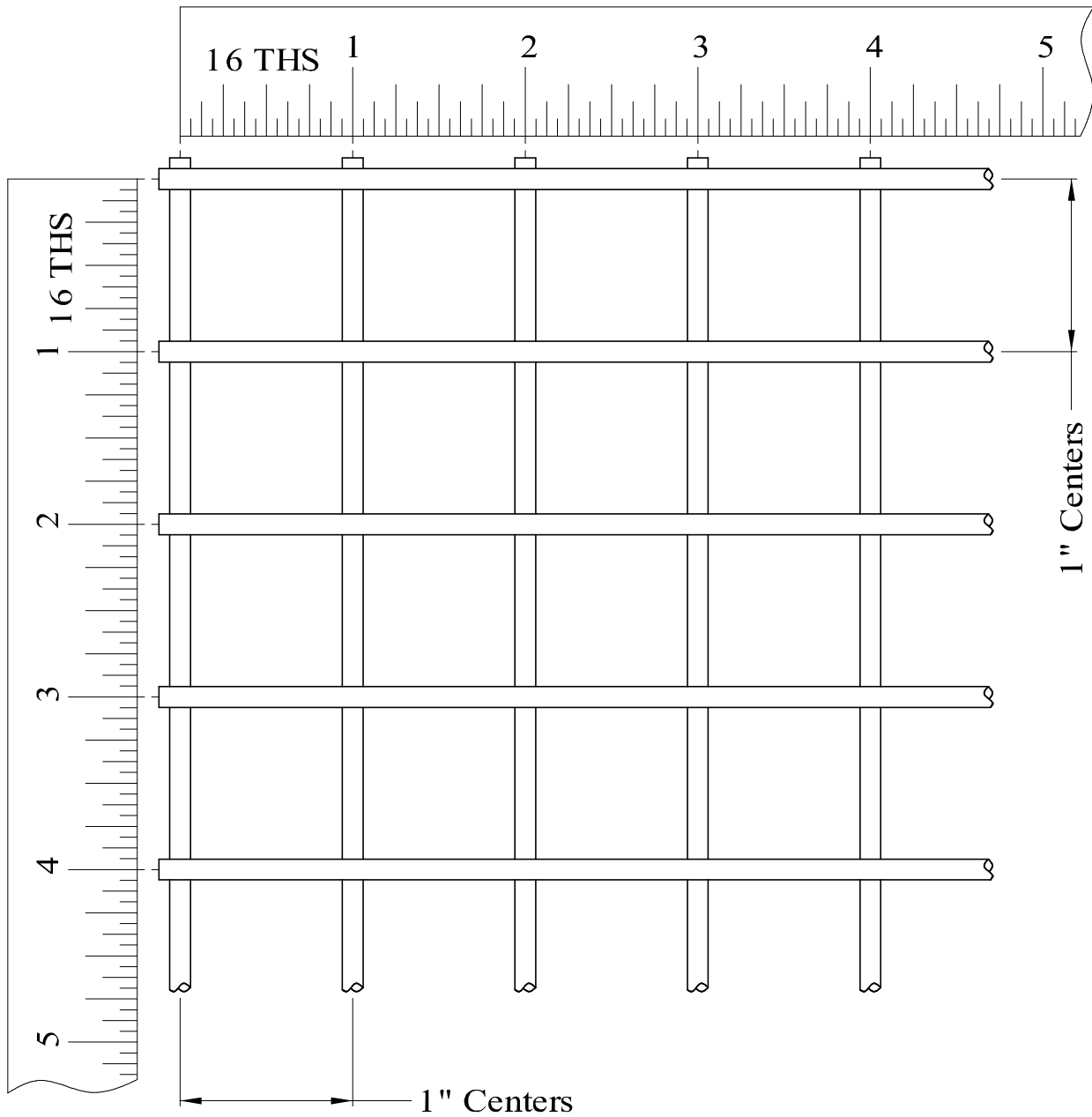


1" x 1" SQ. Spacing on centers 11 ga (.120") or W1.1 Low carbon steel wire per
 ASTM A1064 Tensile 110-130 KSI.

SQ. Clear openings = .880" 75.6% Open area .946 Lbs. per Sq. Ft.

Nice straight wires & flat panels, manufactured in the USA. Ready to ship within 24 Hrs.

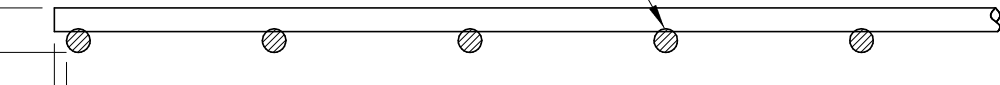
IN STOCK SHEETS 48 1/8" x 96 1/8" 48 1/8" x 120 1/8" 60 1/8" x 120 1/8"



7/32" Thick
 After weld

11 ga (.120") Wire Ø

11 ga Wire diameter equals
 (1) Quarter + (1) Dime
 Stacked up coins



Edge wires

Overhang within 1/16" Around perimeter

Price is based on quantity
 Send your request TODAY.